

Stuga Ltd

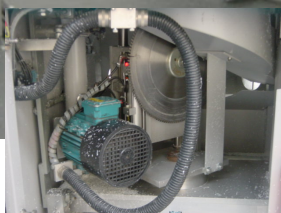
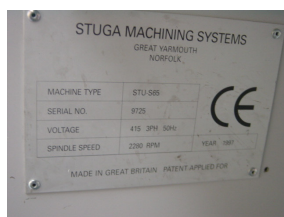
Refurbished Saw 9725

Year of Manufacture: 1997

History:

Installed from new at Abbott Joinery, nr Eastbourne. Used for Cill and Head vent production and as a backup to other saws. Purchased from Liquidator Jul 08.

Full Refurbishment by Stuga Ltd Aug 08



Upgrades Carried Out:

H&S upgrades—Siren, Outfeed Safety Gate, Infeed / Outfeed Trays, E-Stop Safety Relay
New “Samsung” Servo Drive, Motor and Gearbox for pusher axis
Zebra Label Printer and Bar Optimising / Offcut Management Software
Auto Z Turret
New Power Supply Unit
Universal Z Blocks and Clamps
400mm Saw Blade
Self Tensioning Pusher Sprocket

Mechanical Refurbishments:

Stripdown, clean and repaint
Replaced Saw Turntable Cylinders
Replaced Eject Table Cylinders
Replaced Eject Table Shafts and Bearings
Replaced All Clamp Shafts and Bearings
Replaced Pusher Bearings
Replaced Infeed Arm Belts and Load Strips